



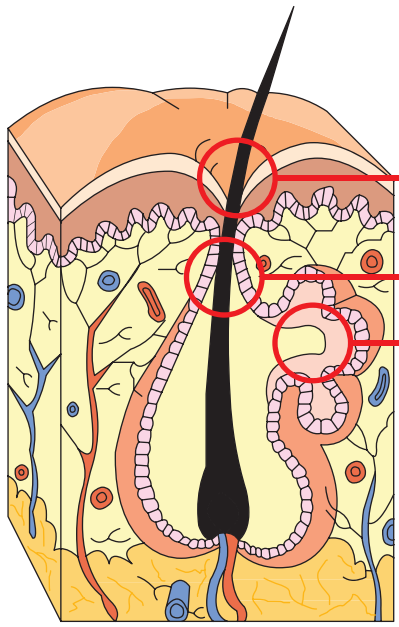
“Free your skin!”



EXFOLIAC

BLEMISH-PRONE, COMBINATION AND OILY SKIN

Exfoliac acts on all 3 factors of acne



- Keratinisation disorder
- Inflammation
- Increased sebum secretion

Location of acne

In adolescents

Acne is mainly located on the T-ZONE (forehead, nose, chin), as well as on the back and torso.



In women

Acne generally appears on the lower cheeks, chin and jaw line.



HYGIENE



FOAMING GEL

- The synergy of AHA and Zinc
- Gently cleanses
- Helps clarify the skin



FACIAL SCRUB

- As a complement to the foaming gel
- Exfoliates & smoothes the skin



MICELLAR WATER

- As a complement to the foaming gel
- Exfoliates & smoothes the skin

CARE



ACNOMEGA 100

- MILD acne blemishes
- Keratoregulating matifying care with AHA's



ACNOMEGA 200

- MODERATE TO SEVERE acne blemishes
- Keratoregulating matifying care with AHA's



LOTION

- Face, back, chest, pili incarnati & keratosis pilaris



NC GEL

- Specific spot treatment

COMPLEMENTARY CARE



MOISTURISING MATIFYING CREAM

- OILY or COMBINATION skin, weakened by external aggressions
- Calms sensations of irritation, helps fight appearance of redness



RECONSTRUCTIVE CREAM

- For skin dried and weakened by oral isotretinoin



AMILAB LIP BALM

- For lips which are dry, chapped and painful due to oral isotretinoin treatment



EXFOLIAC MATIFYING SUNCARE FLUID

- For lips which are dry, chapped and painful due to oral isotretinoin treatment

